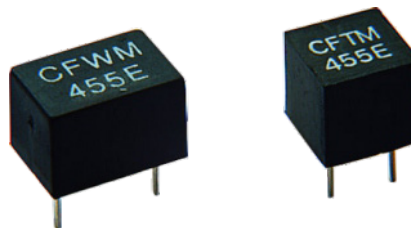


Features

- Input / Output Impedance: 1000Ω ~ 2000Ω
- Highly Selective Ceramic Filters
- Center frequency: 450kHz, 455kHz
- RoHS Compliant
- Insertion Loss (dB) max: 4 db, 6 db
- Pass Band Ripple (dB) max: 2 db
- Applications: *Radio Communication, etc*



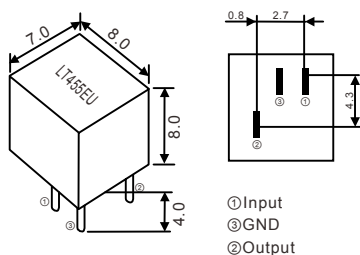
Standard Specifications (455KHz)

| Part Number | Center Frequency (KHz) | Insertion Loss (dB) Max. | Passband Ripple (dB) Max. | 6dB Band Width (KHz) Min. | 50dB Band Width (KHz) Min. | Stop Band Att. ±100KHz (dB) Min. | Input /Output Impedance (Ω) |
|-------------|------------------------|--------------------------|---------------------------|---------------------------|----------------------------|----------------------------------|-----------------------------|
| LT455BU     | 455±2.0                | 4                        | 2                         | ±15                       | ±30                        | 30                               | 1500                        |
| LT455CU     | 455±2.0                | 4                        | 2                         | ±12.5                     | ±24                        | 30                               | 1500                        |
| LT455DU     | 455±1.5                | 4                        | 2                         | ±10                       | ±20                        | 30                               | 1500                        |
| LT455EU     | 455±1.5                | 6                        | 2                         | ±7.5                      | ±15                        | 30                               | 1500                        |
| LT455FU     | 455±1.5                | 6                        | 2                         | ±6                        | ±12.5                      | 30                               | 2000                        |
| LT455GU     | 455±1.5                | 6                        | 2                         | ±4.5                      | ±10                        | 30                               | 2000                        |
| LT455HU     | 455±1.0                | 6                        | 2                         | ±3                        | ±9                         | 30                               | 2000                        |
| LT455IU     | 455±1.0                | 6                        | 2                         | ±2                        | ±7.5                       | 30                               | 2000                        |
| LT455HTU    | 455±1.0                | 6                        | 2                         | ±3                        | ±9                         | 40                               | 2000                        |

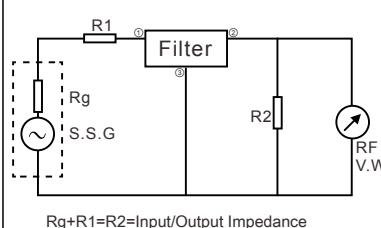
Standard Specifications (450KHz)

| Part Number | Center Frequency (KHz) | Insertion Loss (dB) Max. | Passband Ripple (dB) Max. | 6dB Band Width (KHz) Min. | 50dB Band Width (KHz) Min. | Stop Band Att. ±100KHz (dB) Min. | Input / Output Impedance (Ω) |
|-------------|------------------------|--------------------------|---------------------------|---------------------------|----------------------------|----------------------------------|------------------------------|
| LT450BU     | 450±2.0                | 4                        | 2                         | ±15                       | ±30                        | 30                               | 1500                         |
| LT450CU     | 450±2.0                | 4                        | 2                         | ±12.5                     | ±24                        | 30                               | 1500                         |
| LT450DU     | 450±1.5                | 4                        | 2                         | ±10                       | ±20                        | 30                               | 1500                         |
| LT450EU     | 450±1.5                | 6                        | 2                         | ±7.5                      | ±15                        | 30                               | 1500                         |
| LT450FU     | 450±1.5                | 6                        | 2                         | ±6                        | ±12.5                      | 30                               | 2000                         |
| LT450GU     | 450±1.5                | 6                        | 2                         | ±4.5                      | ±10                        | 30                               | 2000                         |
| LT450HU     | 450±1.0                | 6                        | 2                         | ±3                        | ±9                         | 30                               | 2000                         |
| LT450IU     | 450±1.0                | 6                        | 2                         | ±2                        | ±7.5                       | 30                               | 2000                         |
| LT450HTU    | 450±1.0                | 6                        | 2                         | ±3                        | ±9                         | 35                               | 2000                         |

Dimensions [mm]



Test Circuit



Characteristics

