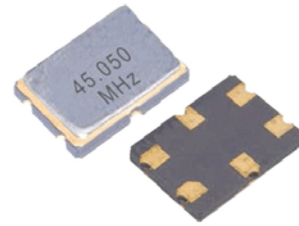


Features

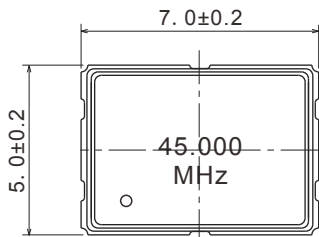
- Typical 7.0×5.0×1.3mm SMD crystal filter
- 4 pole function in a single package
- Excellent guaranteed attenuation
- Excellent shock and vibration resistance
- Automatic mounting and reflow soldering
- Applications: *Wireless Communications, Phone, Radio Communications, etc.*
- RoHS Compliant / Pb Free



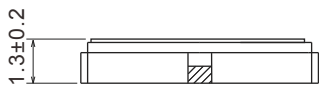
Standard Specifications

Type	CF 4-Pole SMD Crystal Filter			
Nominal Frequency	38.850MHz	45.000MHz	49.950MHz	51.650MHz
Pole	4	4	4	4
Overtone Order	Fundamental	Fundamental	Fundamental	Fundamental
Pass Bandwidth	±3.75KHz min./3dB	±7.5KHz min./3dB	±7.5KHz min./3dB	±5KHz min./3dB
Stop Bandwidth	±15KHz min./35dB	±22KHz min./25dB	±25KHz min./35dB	±22KHz min./30dB
Ripple	1.0dB max.	1.0dB max.	1.0dB max.	1.0dB max.
Insertion Loss	4.0dB max.	4.0dB max.	4.0dB max.	4.0dB max.
Guaranteed Attenuation	80dB min.	80dB min.	80dB min.	80dB min.
Terminating Impedance	560Ω//5pF	600Ω//2pF	400Ω//4.5pF	400Ω//2.5pF
Operating Temperature	-20~+70°C			
Packing Unit	1000pcs./reel			

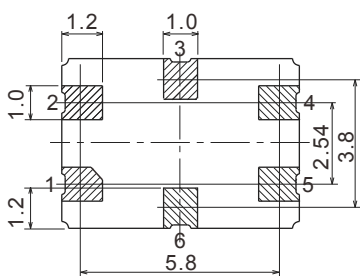
Dimensions [mm]



Top View

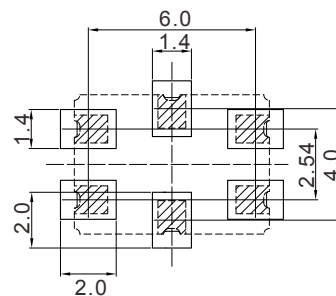


Side View

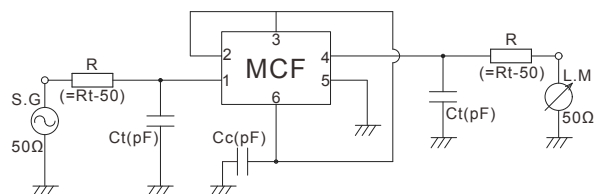


Bottom View

Pin	Connetction
1	Input
2	GND
3	GND
4	Output
5	GND
6	GND



Recommended Land Pattern



Measurement Circuit